



# ODYSSEY ENERGY LIMITED

ANNOUNCEMENT TO THE AUSTRALIAN SECURITIES EXCHANGE: 26 MARCH 2008

---

## **SIGNIFICANT NEW GAS DISCOVERY AT NORTH HELPER GAS PROJECT, UTAH**

The Board of Odyssey Energy Limited (“Odyssey” or “Company”) is very pleased to announce a significant new gas discovery at its 30% owned North Helper Gas Project in Utah, with the discovery well flowing at an initial production rate of 1.5 million cubic feet of gas per day (“mmcf”). The operator of the project, Marion Energy Limited (ASX Code: MAE - “Marion”) has advised;

- *Drilling of Kenilworth Railroad 1-A (“KRR 1-A”) at North Helper was recently completed; with the well designed to appraising a number of conventional gas reservoirs beneath the established Ferron Coal-Bed Methane play, and if these formations were not productive be converted into a Water Disposal well for the project.*
- *During drilling the well encountered high pressures and gas shows in a number of these deeper objectives including strong gas shows in a 50 ft sand in the Morrison Formation at 5,550 ft.*
- *Subsequent testing of the well has established an initial flow rate of 1.5 million cubic feet of gas per day (“mmcf”), with the well now completed and tied into the project’s production infrastructure and selling gas.*

*Commenting on this new gas discovery Odyssey’s Managing Director Mark O’Clery said “this is a particularly important development for North Helper and the Company. Having established an extension to Anadarko’s Helper Coal-Bed Methane Gas Field in the project in 2006–07, the Company has long seen the potential for shallower conventional gas discoveries as being developed by our competitors to the north and east, and the potential for significant deeper gas discoveries in the southern and central parts of the 29,000 acre project.*

*Odyssey did not contribute to the drilling of this well (which captures 160 acres of the play through production), but intends to back-in to the well under the Joint Venture Operating Agreement through cash flow from production (at 3X our share of the drilling and completion costs) and no upfront cash outlay.*

*While the full significance of this discovery is not yet known, this is the first productive well in this Morrison sand within a 50 mile radius, and Operator believes that the play has the potential to extend over an area of 3,800 acres of the central part of the North Helper Gas Project”.*

Enquiries-

Mark O’Clery

Managing Director

Contact Details:

Telephone: (61 8) 9322 6322

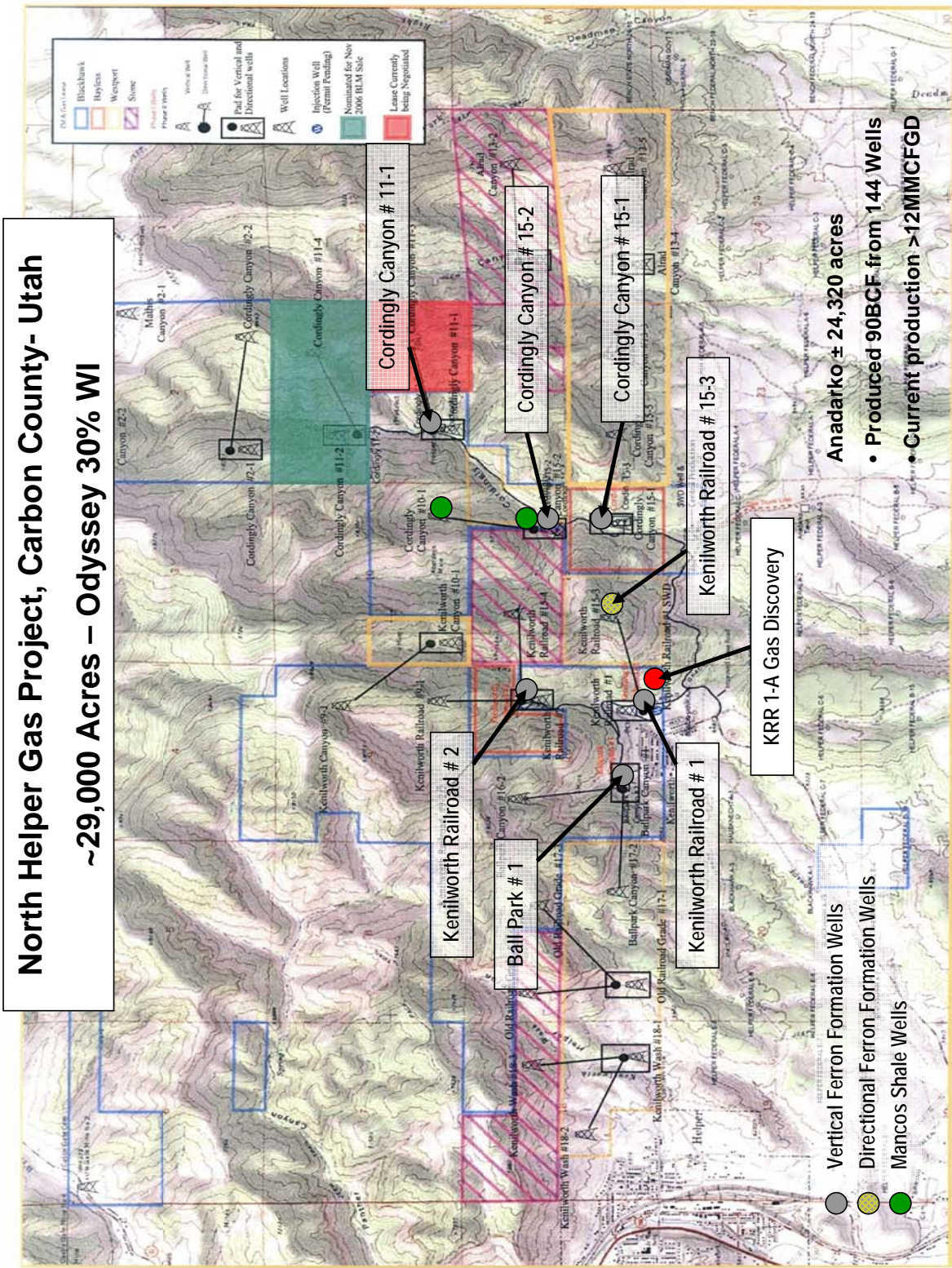
Facsimile: (61 8) 9322 6558

Mobile: (0402) 111 279

ABN: 73 116 151 636

Level 9, BGC Centre, 28 The Esplanade, Perth WA 6000

Tel: +61 8 9322 6322 Fax: +61 8 9322 6558



Location of the new North Helper gas discovery – Kenilworth Railroad 1-A.